

TOP LOAD WASHER

CHiQ

WTL80W

WHITE

CAPACITY

8KG

AVERAGE WATER USE

110L

SPIN SPEED

650 RPM

ENERGY RATING

2 star

WIDTH

580 mm

HEIGHT

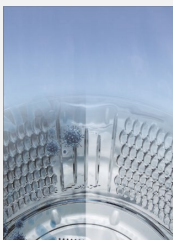
960 mm

DEPTH

625 mm

WELS RATING

3 star



DRUM CLEAN

You can clean the washing machine drum from time to time to keep the machine free from bacteria.



ONE TOUCH

With one touch of the "Smart clean" Button, the washing process will be completed automatically.



WATERFALL FLOW

3D water flow, supports twist and tangle free! Perfect balance between Washing performance and care of clothes.



SOFT CLOSE LID

Soft closing lid to prevent accidents and gives an unhindered view of what's in your washing machine.

SPECIFICATIONS

CHiQ Model	WTL80W	-----	-----
Total capacity	8 kg	Supply	
Maximum spin speed	650 RPM	Installation type	Free standing base
MEPS (star)	2	Voltage (V)	220-240
WELS (star)	3	Frequency (Hz)	50
Cabinet Colour	White	Rated input power (Watt)	1750
Display Colour	Black	Water pressure range	0.03 ~ 0.80
Product Dimensions (WxHxD) mm	580 x 960 x 625	Water inlets	Cold-hot
Packing Dimensions (WxHxD) mm	666 x 1045 x 676	Water inlets position	From back
Net Weight (kg)	38	Water inlet pipe length (m)	1.5 m
Gross Weight (kg)	42.5		
Display	7-segment (88)		
Tub / Drum material	Plastic / Stainless steel		
Loading door	Glass with damper		
Control Type	Digital		
Tub dimensions(mm)	Φ475		
EAN Code	6926130572986		

FEATURES

One Touch smart program
Delay start
Child lock
Detergent Dispenser
Glass lid with damper
Fuzzy logic function
Failure detection system
Drain pump with filter

WASHING PROGRAM

Number of programs	8
Cotton	Yes
Quick	Yes
Strong	Yes
Kids	Yes
Heavy Duty	Yes
Spin Only	Yes
One touch	Yes
Drum clean	Yes

Warranty

Washing Machine	3 years
Motor	10 years parts warranty (* 3 Years parts & labour + 7 years on Motor - parts only).